



Scottish Care Information

SCI Store

# **Installation & Configuration Guide**

## **ISD Reference Retrieval**

For SCI Store Release 8.3

25/02/2013

SCI-DPUG-007

<b>1</b>	<b>Introduction</b>	<b>2</b>
1.1	Document purpose	2
1.2	Intended audience	2
1.3	Background	2
<b>2</b>	<b>Download &amp; Install Reference Files</b>	<b>3</b>
2.1	Download – from ISD website	3
2.2	Install – using the data import service	3
2.2.1	<i>Create the Reference Data Service</i>	3
<b>3</b>	<b>Running the Reference Data Service Import</b>	<b>6</b>
3.1	Procedure	6
	<b>Document Control</b>	<b>7</b>
	Document Information	7
	Change Log	7

# 1 Introduction

## 1.1 Document purpose

This document describes the procedure to install and configure the IDS reference file in SCI Store. Detail is provided with regard to how these files can be obtained and how to set up a service to update the files currently held by the database.

## 1.2 Intended audience

This document is intended for

- NHS Scotland Health Board staff who administer the local SCI Store server
- Atos Origin SCI Store Support Staff Overview

## 1.3 Background

ISD Scotland publish national reference files. These standard Data Validation Reference files (e.g. consultants, GPs, location etc) used within SCI Store are updated on a weekly basis.

These files can be downloaded from the following locations:

- <http://www.isdscotland.org/isd/1610.html>

**Note:** The files can be accessed from the NHSnet only.

To ensure that each version of SCI Store is kept up-to-date it is recommended that each local copy be updated on a regular basis.

## 2 Download & Install Reference Files

### 2.1 Download – from ISD website

This section details the process to download reference for GP, Consultant, and Practice details.

*Procedure:*

- Create a folder on the SCI Store server the source file will be copied to
- Download the self-extracting (\*.exe) reference file archive containing the 17 standard reference files from <http://www.isdscotland.org/isd/1610.html> (NHSnet access required).
- Double-click the file to extract the files ( or use [7-zip](#) or equivalent software package)

The files needed for SCI Store are:

- MEDDEN
- GPREF
- GPPRAC
- LOCATION

The others can be ignored or deleted.

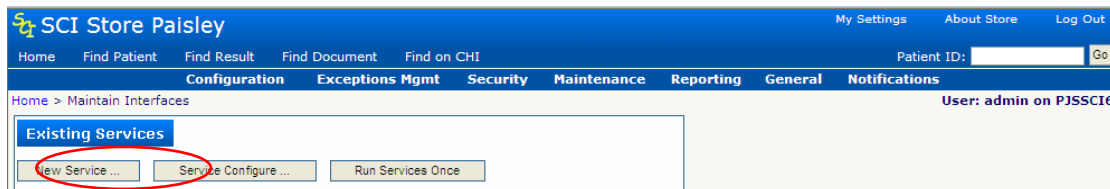
### 2.2 Install – using the data import service

#### 2.2.1 Create the Reference Data Service

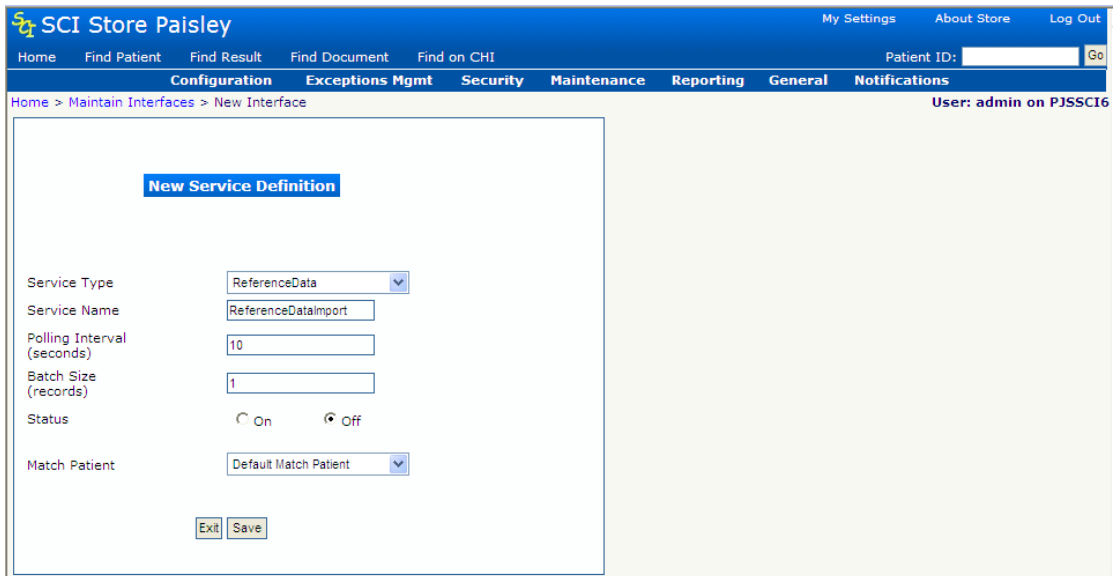
- From the “Configurations” Menu, select “Maintain Services”...



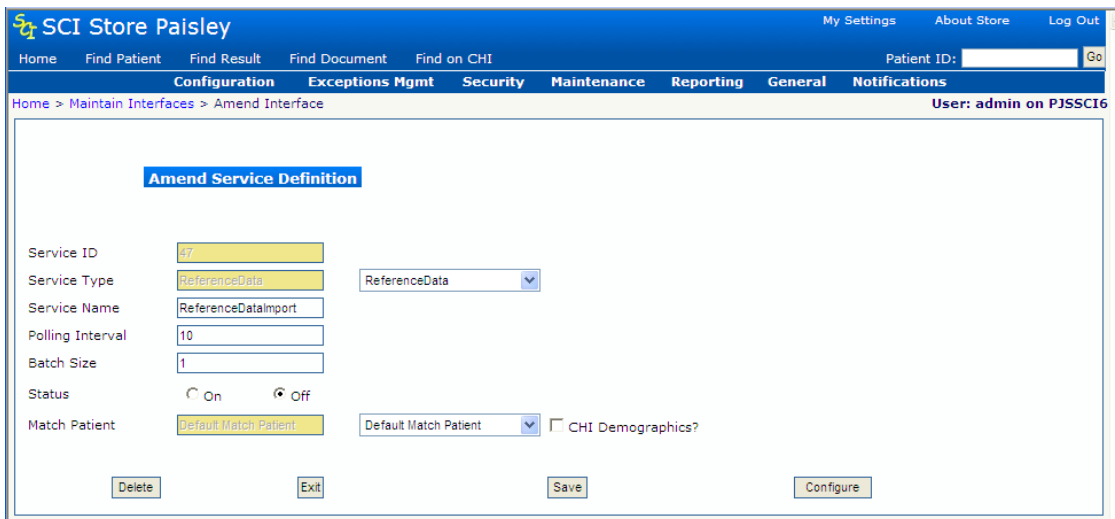
- On the Service list screen, click “New Service”:



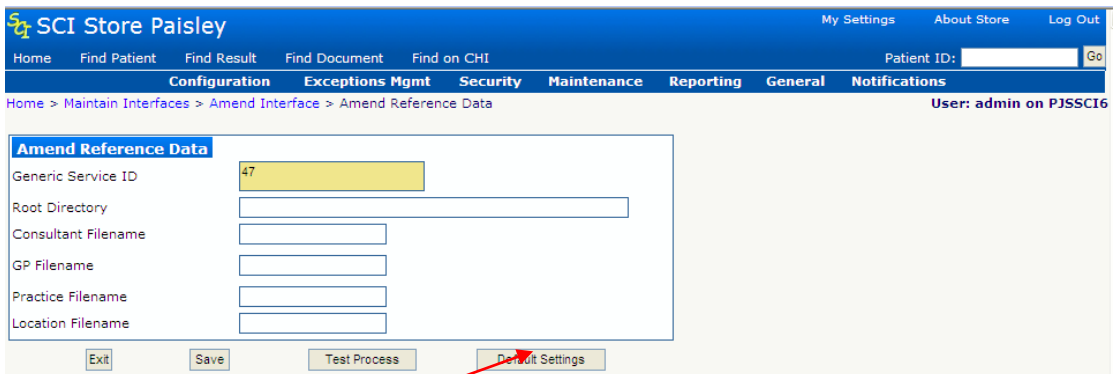
- From the drop-down list of Service Types, select “ReferenceData”. Enter a distinct Name for the Service Name. Status should be set “Off”, since this Service should not run routinely. The other values are not relevant.



- Click “Save” to create the service and return to the “Maintain Services” screen where the service will now be included in the list.
- Select the newly created Service from the “Maintain Services” screen:

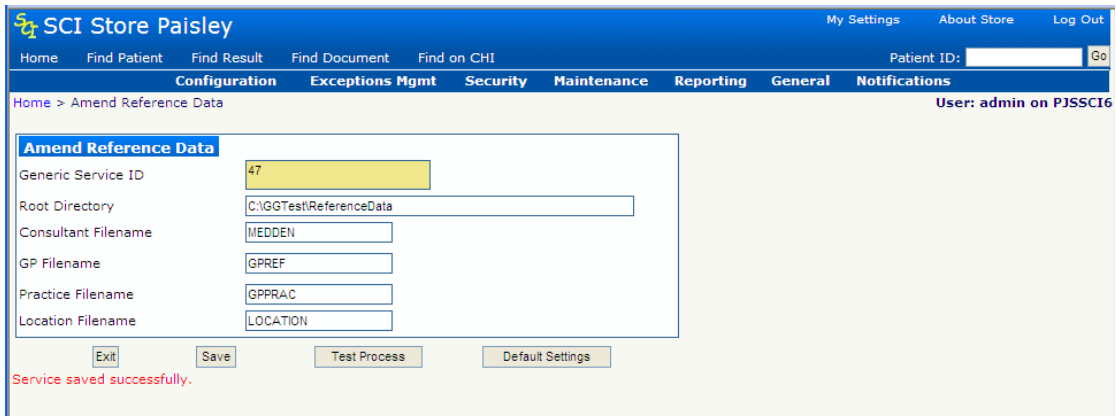


- 4.1.5 Click the “Configure” button.....



Click “Default Settings” and change the Root Directory value if required to the location of the ISD Data files. The other items should not be altered. Click “Save” to save the configured Service. Setup is now complete. Click “Exit” to return to the Maintain Services screen.

Installation & Configuration Guide – SCI Store ISD Reference Files



SCI Store Paisley

My Settings About Store Log Out

Home Find Patient Find Result Find Document Find on CHI Patient ID:  Go

Configuration Exceptions Mgmt Security Maintenance Reporting General Notifications

Home > Amend Reference Data User: admin on PJSSCI6

**Amend Reference Data**

Generic Service ID

Root Directory

Consultant Filename

GP Filename

Practice Filename

Location Filename

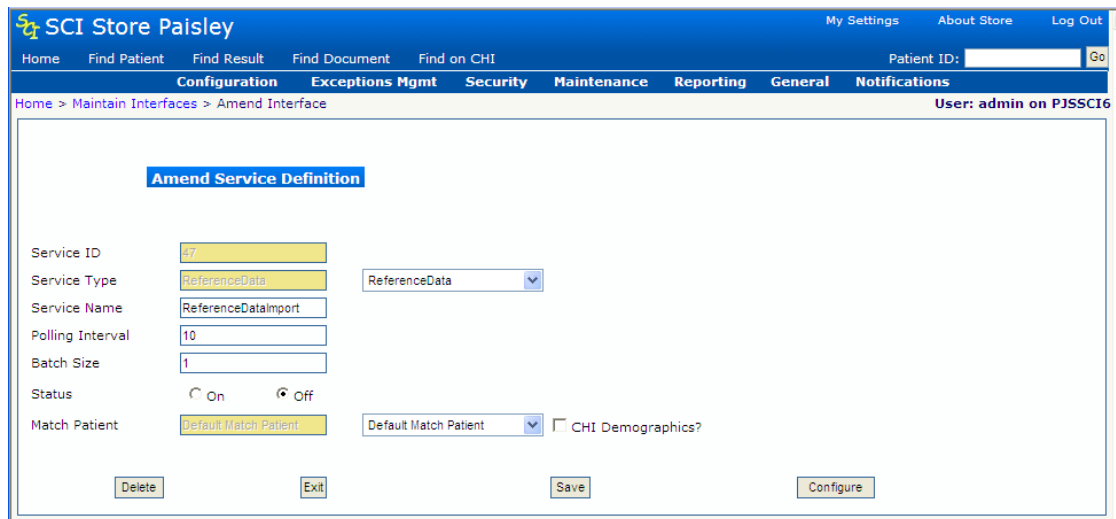
Service saved successfully.

### 3 Running the Reference Data Service Import

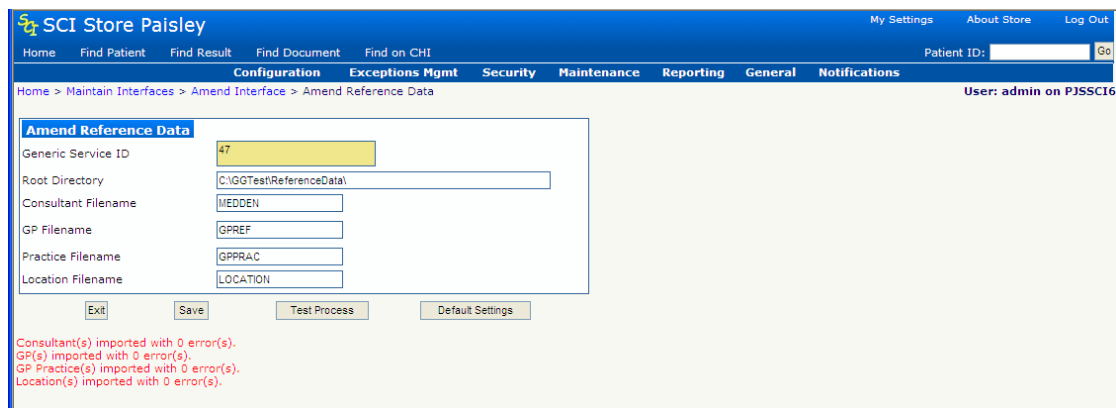
#### 3.1 Procedure

[Note: it is possible to click the “Test Process” without saving the Service; it won’t do anything since the data required have not been saved. This should be changed].

- Select the “Reference Data” service from the “maintain Services” screen....



- Click “Configure” from the “Amend Service Definition” screen and then click the “Test Process” button. If the process runs correctly, the message shown below will be displayed; otherwise an error message will be displayed.



- For each of the ISD files **MEDDEN**, **GPREF**, **GPPRAC**, and **LOCATION**, if import is completed successfully the file is transferred to a subdirectory “Archive” within the initial file location.

## Document Control

### Document Information

Name: ISD Ref Retrieval - Installation and Configuration  
Issue: 2.0  
Location: Linwood  
Identifier: SCI-DPUG-007  
Filename: SCI Store - ISD Ref Retrieval - Installation and Configuration.doc  
Format: Microsoft Office Word 2003  
Owner: Campbell Roberts  
Status: Draft  
Distribution: SHOW

### Change Log

Issue: 2.0  
Date: 03/07/2009  
Changed by: Campbell Roberts  
Details: Final version for V5.1 of SCI Store

Issue: 1.0  
Date: 23/01/2013  
Changed by: Campbell Roberts  
Details: Final release for V8.3 Of SCI Store